

TECHNICAL RIDER SCHOUWBURG

Update January 2025



Cultuurcentrum De Spil vzw
Hippoliet Spilleboutdreef 1
B-8800 Roeselare
T +32 51 265 700
info@despil.be
www.despil.be

CONTACT

Technical Director Wim Bagein – T +32 51 265 700 – M +32 478 511 767 – wim.bagein@despil.be
Mobile number technicians, **only on the performance days, no pre-production!** +32 489 965 196

GENERAL - AUDIENCE PART

- CAPACITY**

Ground Floor	598 seats, of which 90 mobile seats on the orchestra pit
Balcony	238 seats
Wheelchairs	6 places on row A of the ground floor
- ACCESS**

The main entrance is located at the front of the building.
Access to the venue via 2 doors on the ground floor, 2 doors on the first floor and 2 doors on the second floor

GENERAL – BACKSTAGE

- STAGE ACCESS**

Via the loading dock on the parking of the Schouwburg, which can accommodate 1 truck/trailer (parking situated on the right hand side of the building)
GPS coordinates : N 50°56'15.418" E 3°7'28.885"
Height of the loading dock is 110cm
1 sectional door of 2,85m wide and 3,20m high
The smallest passage to the stage is 2,79m wide and 3,02m high
Next to the loading dock you can find the artist entrance. Access by a 4-digit code, obtainable on request
- DRESSING ROOMS**

There is a total of 11 dressing rooms, divided over 3 floors.
There is Wi-Fi in the dressing rooms
All dressing rooms are equipped with a sink, cold and hot water, a lighted mirror and stage monitoring
On every floor there are 2 toilets and 2 showers
Depending on availability, there is the possibility to use one or more classrooms as extra dressing room

FIRST FLOOR
Dressing room 1 (3 persons, 12m²) Dressing room 2 (7 persons, 19m²)
Dressing room 3 (3 persons, 10m²)
Green Room

GROUND FLOOR (stage level)

Dressing room 4 (2 persons, 7m²) Dressing room 5 (1 person, 6m²)
Dressing room 6 (3 persons, 10m²) Dressing room 7 (2 persons, 7m²)
Dressing room 8 (3 persons, 9m²)

BASEMENT FLOOR

Dressing room 9 (4 persons, 11m²) Dressing room 10 (7 persons, 18m²)
Dressing room 11 (4 persons, 11m²)

SAFETY AND REGULATIONS

All elements being placed on stage or hung in the fly bars (scenery, curtains, wooden elements, ...) must be flame-retarding.

Every use of smoke, fire, pyrotechnics, confetti, ... must be communicated in advance and discussed if necessary.

Operation of the fly bars is reserved for our own staff, except after explicit permission.

It is absolutely forbidden to lift people with the fly bars.

The safety/fire curtain must at all times be able to come down in free fall. Therefore, it is forbidden to build scenery underneath the safety/fire curtain

The maximum permitted noise level for electronically amplified (music) activities is 95dB (A) LAeq15min. Fines arising from violations will be recovered from the technician who commits the violation.

Smoking is prohibited in the entire building.

STAGE / INFRASTRUCTURE

1. DIMENSIONS

Playable width : 9m to 12m

Playable height : 5,5m to 7m (movable teaser)

Stage : 20m wide (wall to wall)

80cm high

15,2m deep (stage edge to back wall)

Apron : 2,40m deep

2. CHARACTERISTICS

Floating stagefloor

Metal frames 0,5m on 2m in which Keruing wood is laid

Painted black with Rosco stage paint

Divided bearing power : 500kg/m²

3. FLY TOWER / FLY BARS

Free height between stage floor and fly bars : 17,40m

Height between stage floor and fly loft : 18,35m

Height between stage floor and roof : 20,50m

25 FLY BARS OVER THE STAGE FLOOR

15m long, 50mm diameter, double tube

Computer controlled fly bars, max speed 1,2m/sec (ArtThea)

Maximum load : 300kg divided

Maximum point load : 150kg

4 FLY BARS OVER THE REAR STAGE

12m long, 50mm diameter, double tube

Motorised fly bars, 2 fixed speeds (not computer controlled)

Maximum load : 200kg divided

Maximum point load : 100kg

2 LATERAL FLY BARS

9m long, 50mm diameter, double tube

Motorised fly bars, 1 fixed speed (not computer controlled)

Maximum load : 300kg divided

Maximum point load : 100kg

1 APRON FLY BAR

11m long, 50mm diameter, single tube

Motorised fly bar, 1 fixed speed (not computer controlled)

Maximum load : 300kg divided

Maximum point load : 100kg underneath the hoist cables (50kg between the hoist cables)

Note : the default usage can be adapted according to the needs of the production

N°	Default usage	Position	Depth	Length	Max load
-1		Apron	-2,40	11m	300 kg / 100 (50kg)
1		Stage	1,15	15m	300 kg / 150kg
2	Border	Stage	1,54	15m	300 kg / 150kg
3	Legs	Stage	1,74	15m	300 kg / 150kg
4		Stage	1,94	15m	300 kg / 150kg
5		Stage	2,34	15m	300 kg / 150kg
6	Border	Stage	2,74	15m	300 kg / 150kg
7	Legs	Stage	3,14	15m	300 kg / 150kg
8		Stage	3,54	15m	300 kg / 150kg
9	Border	Stage	3,94	15m	300 kg / 150kg
10	Legs	Stage	4,34	15m	300 kg / 150kg
11		Stage	4,74	15m	300 kg / 150kg
12		Stage	5,14	15m	300 kg / 150kg
13	Border	Stage	5,54	15m	300 kg / 150kg
14	Legs	Stage	5,94	15m	300 kg / 150kg
15		Stage	6,34	15m	300 kg / 150kg
16		Stage	6,74	15m	300 kg / 150kg
17	Border	Stage	7,14	15m	300 kg / 150kg
18	Legs	Stage	7,54	15m	300 kg / 150kg
19		Stage	7,94	15m	300 kg / 150kg
20	Border	Stage	8,34	15m	300 kg / 150kg
21	Cyclorama Lights	Stage	8,74	15m	300 kg / 150kg
22	Legs	Stage	9,14	15m	300 kg / 150kg
23		Stage	9,74	15m	300 kg / 150kg

24	Black Backdrop	Stage	10,34	15m	300 kg / 150kg
25	White Backdrop	Stage	10,54	15m	300 kg / 150kg
26		Rear Stage	11,48	12m	200 kg / 100kg
27		Rear Stage	11,92	12m	200 kg / 100kg
28		Rear Stage	12,27	12m	200 kg / 100kg
29		Rear Stage	12,64	12m	200 kg / 100kg
SIDE		Stage Left	***	9m	300 kg / 100kg
SIDE		Stage Right	***	9m	300 kg / 100kg

4. ORCHESTRAPIT

The orchestra pit is made out of 3 parts:

- 1 centre part (2,2m x 4,3m) which is a hydraulic elevator platform (lifting capacity = 2t)
4 levels : stage, ground floor, orchestra pit (= 2,35m lower than stage level), basement
- 2 outer parts, spindle elevator platform (lifting capacity = 0kg)
3 levels : stage, ground floor, orchestra pit (= 2,35m lower than stage level)

14m wide on the widest point and 3,34m deep on the deepest point (5,65m when on orchestra pit level)

5. FLY GALLERIES

2 lateral fly galleries over the stage sides, free height underneath is 7,2m

1 lighting bridge (fixed height!!), connecting to the lateral fly galleries, free height underneath is also 7,2m

9 fly galleries over the auditorium, of which 5 usable for lighting

6. ELECTRICAL SUPPLY

Electrical supply for sound and lighting are separated from each other

STAGE RIGHT

- 3 x 400V – 125A (lighting)
- 3 x 400V – 63A (lighting)
- 3 x 400V – 32A (lighting)
- 4 x 400V – 16A (lighting)

STAGE LEFT

- 1 x 400V – 63A (sound, connection to stage right provided)

There are several additional power plugs on stage: 240V – 16A

TECHNICAL EQUIPMENT – GENERAL

1. CURTAINS / SCREENS

- Travelling curtain night blue, german opening, manual operation (stage left, down stage)
- 14 legs night blue 3m x 9m (w x h)
- 5 borders night blue 15m x 3m (w x h)
- 2 (half) back drops night blue 9,5m x 9m (w x h)
- 1 back drop night blue 15m x 9m (w x h)
- 1 back drop white 15m x 9m (w x h)
- 4 side drops 5m x 7m (w x h – 2 per side, mounted on rail underneath lateral fly galleries)
- 1 black scrim 15m x 9m (w x h)
- 1 projection screen white (frontal) 14m x 7m (fixed installation just behind travelling curtain)
- 1 projection screen white (frontal) white 6m x 4m (w x h – on alu frame – rigging only)
- 1 projection screen frontal & rear 6m x 3,375m (w x h – on alu frame – rigging only)

2. MARLEY

Black / white

- 7 lanes of 14m on 1,6m
- 2 lanes of 12,5m on 1,6m
- 1 piece adapted to the shape of the apron

Black / grey

- 5 lanes of 10m on 2m

3. INTERCOM

- Clearcom party-line wired intercom system (1 main station / 6 beltpacks)
- Hollyvox wireless intercom system (8 beltpacks with single-ear headsets)

4. RIGGING

- 18 black steels 1m (SWL 60kg)
- 8 black steels 2m (SWL 300kg)
- 4 black steels 4m (SWL 300kg)
- 6 black steels 6m (SWL 300kg)
- 8 black Reutlinger steels 8m (SWL 130kg)
- 10 black softsteels 1m (SWL 2t)
- 10 black softsteels 1,6m (SWL 2t)
- 10 black softsteels 2m (SWL 2t)
- 28 black shackles (SWL 750kg)
- 20 black shackles (SWL 1t)
- 30 black shackles (SWL 2t)
- 20 Doughty rotating swivel couplers
- 20 Doughty clamps with bolt eye
- 1 truss Prolyte X30-D 1m (alu)
- 1 truss Prolyte X30-D 2m (alu)
- 10 truss Prolyte X30-D 3m (alu)
- 4 truss Prolyte X30-V 3m (alu)

5. STAGING

- 37 stage decks black, 2m x 1m
- 1 stage deck black 1m x 1m
- 72 legs 20cm
- 76 legs 40cm
- 68 legs 60cm
- 100 legs 80cm
- 144 legs 1m
- 56 legs 1,2m
- 7 deck handrails 2m
- 14 deck handrails 1m
- 4 stairs max 80cm high, 1m wide
- 8 handrails for 80cm stairs

TECHNICAL EQUIPMENT – LIGHTING

1. DIMMERS

- 224 x 2,5kW (ADB Eurodim 2)
- 18 x 5kW (ADB Eurodim 2)
- 14 x switch 2,5kW (ADB Eurodim 2)
- 1 x dimpack 6 x 3kW (ADB Memopack - mobile, 400V 32A)
- 4 x dimmer 1 x 2kW (mobile, 240V 16A) with integrated manual fader

2. LIGHTING DESKS

- Chamsys MQ-70 with 24" touchscreen
- Chamsys Extra Wing (shared with Komodie, so check availability!)

3. CONNECTIONS

Multi connectors are Harting Han-16 for all 2,5kW channels or Han-6 for all 5kW channels

All 2,5kW channels have CEE 16A (blue) connectors

All 5kW channels have CEE 32A (blue) connectors

- 2 x DMX booth -> stage right
- Luminex GigaCore 14R in the booth and on stage right connected by 2 fiber cables
Support : sACN – ArtNet – MaNet2 – HogNet – RTTrPL
- Luminex Ethernet-DMX MkII node on stage right
- 4 x CAT6 technical seats in the venue -> booth
- 4 x CAT 6 stage right -> stage left

4. LIGHTING STANDS

- 7 x Chrome Manfrotto wind-up stand : 3,7m
- 1 x Chrome Manfrotto telescopic stand : 3,8m
- 5 x Black Manfrotto telescopic stand : 3,0m
- 13 x floorstand for mounting with hook
- 20 x floorstand for mounting without hook

5. HOUSE LIGHTS

LED fixtures, DMX-controlled

6. LUMINAIRES – AUDITORIUM FLY GALLERIES

- 12 x PC 2kW ADB C-203
- 6 x PC 1,2kW ADB C-103
- 10 x Profile 2kW ADB DN-205 (10°-22°)
- 6 x Profile 1,2kW ADB DSN-105 (11°-23°)
- 2 x Profile 1,2kW ADB DS-105 (15°-31°)

7. LUMINAIRES - BALCONNIES

- 4 x Profile 2kW ADB DN-205 (10°-22°)
- 4 x PC 1,2kW ADB C-103

8. LUMINAIRES – LIGHTING BRIDGE

- 16 x PC 1,2kW ADB C-103
- 5 x Profile 1,2kW ADB DS-105 (15°-31°)

9. LUMINAIRES – MOVABLE TEASERS

- 8 x PC 1,2kW ADB C-103 (4 per side)

10. LUMINAIRES - STAGE

- PC (pebble)
 - 4 x PC 500W ADB C-51
 - 24 x PC 1,2kW ADB C-103
- Fresnel
 - 12 x Fresnel 1,2kW ADB F-101
 - 6 x Fresnel 2kW ADB F-201
 - 2 x Fresnel 5kW ADB SH-50
- Profil
 - 8 x Profile 1,2kW ADB DS-105 (15°-31°)
 - 8 x Profile 1,2kW ADB DW-105 (15°-38°)
 - 7 x Profile 1,2kW ADB DVW-105 (38° - 57°)
- PAR-64
 - 40 x PAR64 CP60 / CP61 / CP62
 - 8 x PAR64 Short-nose CP60 / CP61 / CP62
 - 4 x six-bar CP60 / CP61 / CP62
 - 2 x ACL
- Quartz
 - 8 x wash ADB LF-1000
 - 5 x triple wash ADB ACP-1003H (in flybar 21)
 - 11 x single wash ADB ACP-1001
- Diverse
 - 8 x Striplight Showtec T-20
 - 6 x 2-light Molefay Showtec par36-2L (passive)
 - 2 x Stroboscope 3kW Luxibel LX-301
- LED
 - 20 x LED-Par Showtec Power Spot 9 Q6 Tour (9 x 12W RGBWUVA)
 - 15 x LED-Par Zoom Nicols Par Led 1210 Z (5° - 60° / 12 x 10W RGBW)
- Moving
 - 8 x Spot Chauvet Maverick Force s Spot (3,8° - 43,4° / 350W LED)
 - 14 x Wash Robe LEDBeam 150 FWQ (3,8° - 60° / 7 x 40W RGBW)
 -

11. HAZER

- 1 x Hazer REEL-FX DF-50
- 1 x Fan Antari AF3

TECHNICAL EQUIPMENT – SOUND

1. MIXING DESKS

- 1 x Allen&Heath SQ-6 + 2 x DX168 digital I/O box (expandable to 3 if needed)
Add-ons : Dynamic Trio – Hypabass – Echo – Compressor Pack I
- 1 x Midas M32 + DL32 digital I/O box

2. FOH-SYSTEM

GROUND FLOOR

- 16 x Martin Audio WPS (2 x 8" + 4 x 4" + 4 x 1") in line-array (8 per side)
- 4 x Martin Audio SXC118 cardio sub (1 x 18" + 1 x 14" rear) (2 per side)
- 2 x Martin Audio LE100 on top of the subs (1 x 1" + 1 x 12") infill (1 per per side)
- 6 x Martin Audio WPS (2 x 8" + 4 x 4" + 4 x 1") in line-array centre cluster
- 2 x Martin Audio SX118 sub (1 x 18") flown left & right of the centre cluster
- 4 x Renkus-Heinz TRX-61 (1 x 1" + 1 x 6,5")
- 10 x Renkus-Heinz SGX-41 infill underneath the balconies

BALCONY

- 4 x Renkus-Heinz SGX-41 infill for side balconies 1 and 2 (1 per side per balcony)
- 2 x Renkus-Heinz PNX-121/6A infill for side balconies 3, 4 and 5 (1 per side)
- 4 x Renkus-Heinz PNX-121/6A infill for central balcony (2 per side in cluster)
- 8 x Renkus-Heinz TRX-81 for central balcony

AMPLIFIERS

- 1 x Nion n6 Media Matrix
- 4 x Martin iKon iK42 amplifier (for Martin Audio speakers)
- 3 x Powersoft Ottocanali 4K4 amplifier (for Renkus-Heinz speakers)

3. CONNECTIONS

- Analogue multi 12CH from booth to stage left stageblock -> tie lines to stage right
- Cat5e digital multi + 2 x A&H DX168
- Luminex GigaCore 14R in the booth and on stage right connected by 2 fiber cables
Support : Dante – Ravenna/AES67 – EtherSound – Q-Lan - REAC
- 4 x CAT6 technical seats in the venue -> booth
- 4 x CAT 6 stage right -> stage left

4. WEDGES

- 8 x d&B Max-15
- 2 x Renkus-Heinz TRX-61
- 2 x Powersoft Digam Q4002 amplifiers

5. MICROPHONES

- 1 x Shure Bèta 52
- 3 x Shure Bèta 56
- 6 x Shure SM 57
- 6 x Shure SM 58
- 4 x Shure SM 81
- 3 x Shure Bèta 87
- 2 x Shure SM 98
- 1 x Shure Bèta 57

- 4 x AKG C-480 (CK63 head)
- 2 x AKG C-414 XLII
- 2 x AKG C-411 III
- 2 x AKG C-516 ML

- 2 x Sennheiser MD 421
- 2 x Sennheiser E 606
- 1 x Sennheiser E 604

- 1 x Neumann KMS 105 bk
- 2 x Neumann KM 184 mt

- 4 x DPA 4099 (+ extended range of instrument adapters)

- 3 x Crown PCC 170
- 4 x Audio Technica U 851 R

- 5 x Klark Teknik LBB 100
- 2 x Klark Teknik DN 100
- 2 x BSS AR 133
- 2 x Radial JDI Duplex
- 2 x Radial Pro-AV2
- 1 x Radial USB-Pro
- 1 x Helpinstill Piano pick-up

6. WIRELESS MICROPHONES

- 4 x Shure ULX-D4D digital dual receiver (534 MHz – 598 Mhz)
- 8 x Shure ULX-D1 digital bodypack transmitter
- 4 x Shure ULX-D2 Bèta 58 digital handheld microphone
- 8 x DPA 4066 headset microphone
- 2 x Audio Technica BP-896 miniature microphone

TECHNICAL EQUIPMENT – VIDEO

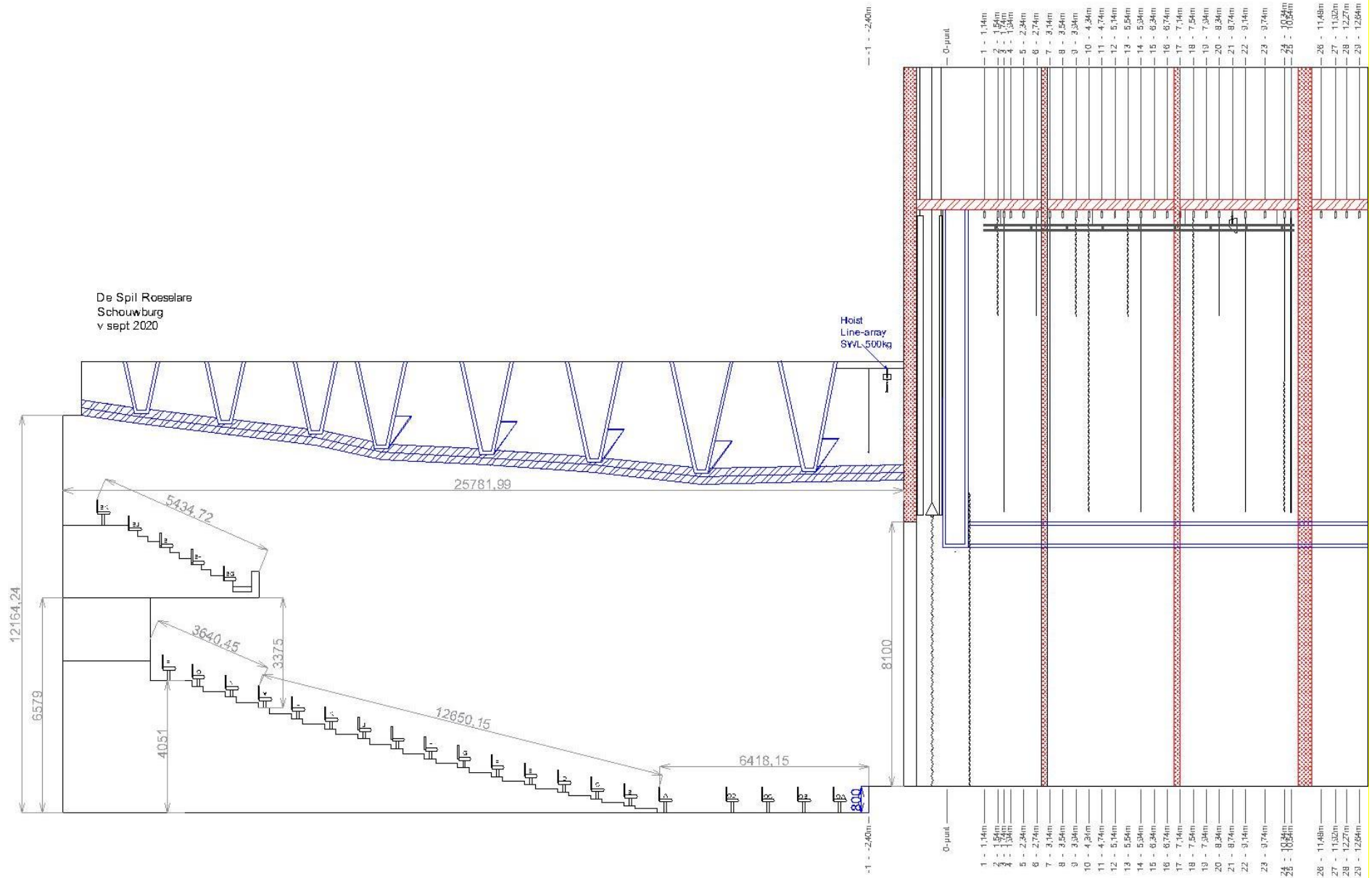
1 x Epson LCD Laser Projector EB-PU2113W (13.000 lumen – WUXGA with 4K enhancement)

- Mid-throw Zoom lens ELPLM15 (1.57 – 2.56 throw ratio)
- Mid-throw Zoom Lens ELPLM10 (2.42 – 3.71 throw ratio)
- Short-throw Zoom Lens ELPLW05 (0.77 – 1.07 throw ratio)

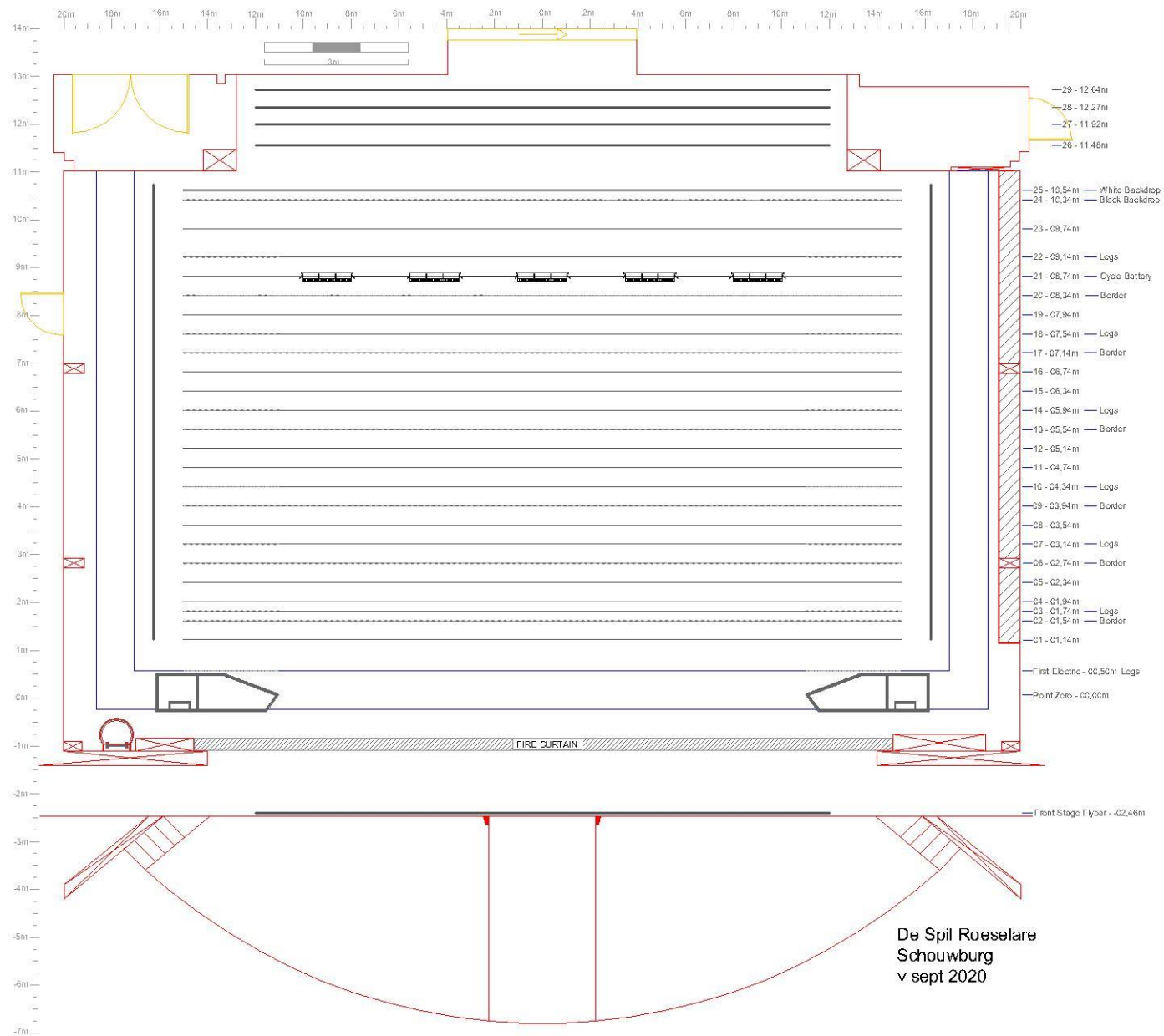
1 x Barco DP2K C15 (15000 ansi-lumen) (fixed installation for cinema purposes)

PLANS

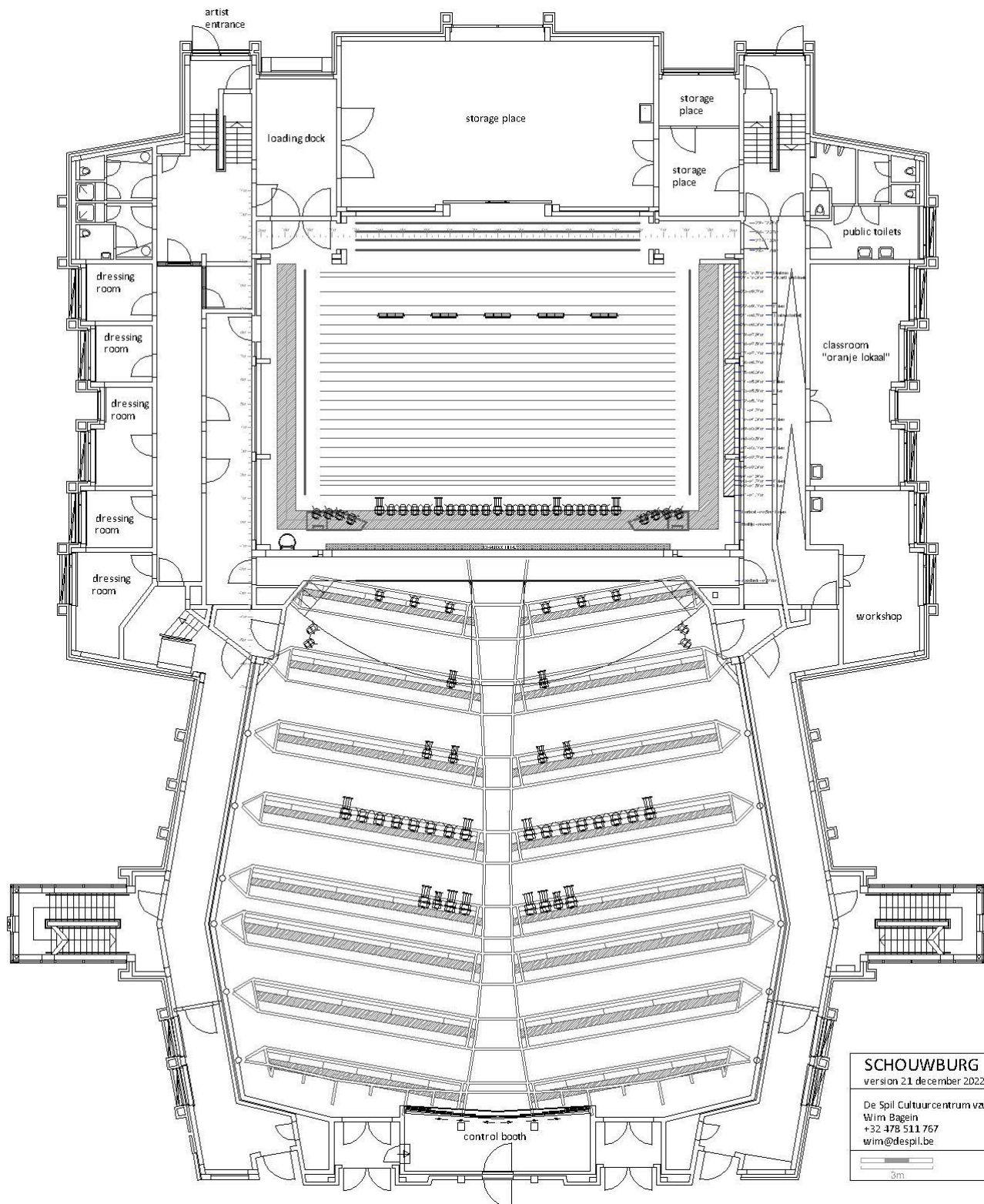
1. SECTION



2. STAGE



3. OVERVIEW



SCHOUWBURG
 version 21 december 2022
 De Spil Cultuurcentrum vzw
 Wim Bagein
 +32 478 511 767
 wim@despil.be

3m

